

LEADING LIGHT TYPE NS 100 LED

DATASHEET

With this cost effective medium intensity led leading light there is no more need for changing lamps.

The led leading light has a build in current source and different divergence angles can be factory set by means of different divergence filters and reflector adjustments.



The housing which also functions as a heatsink is made of marine grade aluminium alloy and painted with a surface treatment of high impact epoxy coating, the top color is grey RAL 7012.

The lightsource is formed through LED's of high intensity, each of them having its own reflector and optics.

Depending on which visibility is needed the light output can be factory set accordingly.

In the housing a membrane is incorporated which enables airpressure equalization and blocking moisture to enter the lanternhousing.

Cable entry is by means of an PG 13.5 cable gland. The NS100 is suitable for Mounting on a 60 mm. Pole, horizontal adjustment 360 dgrs. , vertical adjustment 30 dgrs.

Because no lampchanges are needed maintenance cost are a fraction compared to lampbased leading lights.

**I.T.O. Vaarwegmarkering BV
's Gravendijkseweg 23 2201 CZ
E-mail info@itonavaids.com**

Noordwijk Holland

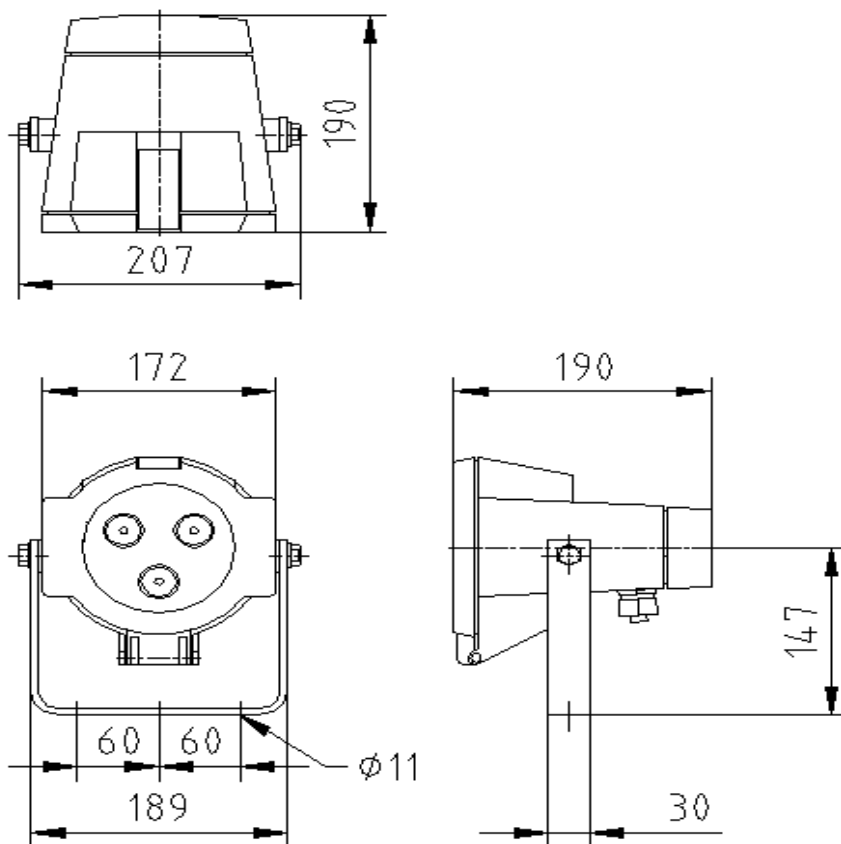
**tel. +31 71 3611987
fax. +31 71 3614219
www.itonavaids.com**



LEADING LIGHT TYPE NS 100 LED

Specifications:

Application	: Harbour entrance leading light
Type	: NS 100 LED
Make	: I.T.O. Vaarwegmarkering B.V.
Lens material	: PMMA/glass
Base material	: Marine grade cast aluminium ALMG3
Hardware	: Stainless steel
Power drain	: Max. 15 watt
Power supply	: 12 -30 volts DC or 230 volts AC
LED life expectancy	: Approx. 100.000 hours
Color emitted light	: White, red, green, yellow
Connection	: Screw terminal
Cable entry	: Cable gland PG 13.5
Horizontal lightspread	: Depending on divergence filter, and reflector adjustments
Vertical divergence	: 6 degrees
Intensity	: Depending on divergence and color max. 30.000 candela
Protectionclass	: IP66
Weight	: Approx. 2 kgs.



I.T.O. Vaarwegmarkering BV
's Gravendijkseweg 23 2201 CZ Noordwijk Holland
E-mail info@itonavaids.com

tel. +31 71 3611987
fax. +31 71 3614219
www.itonavaids.com

