

## 10 MILE LED SIGNAL LANTERN IML 250

### DATASHEET



The signal lantern IML 250 is a 10 mile led beacon with advanced specifications. The lightsource is formed with 18 high intensity leds with precision reflectors and horizontal scattering lenses providing a consistent horizontal divergence.

The signal lantern housing and top are made of marine grade aluminium and painted with two layers of high impact polyester powder coating colour signal grey.

In the signal lantern provisions are made for airpressure equalization and for blocking moisture to enter the lantern housing.

Applied electronics include: infrared remote control for setting the flasher led current, character setting (221 preprogrammed IALA flash codes) and daylight sensor setpoints.

Electrical parameters as led current setpoint, battery voltage, and day/night switching point a.o. can be read.

For synchronizing more lanterns the flasher has hard-wired input/output connections.

Power supply is made through a PG 16 cable gland.

As a option the signal lantern can synchronize with the ITOsync GPS receiver.

In regards to conventional signal lanterns with lamp changers, the advantages are especially the low maintenance cost, the intensity of the emitted light in regard to the power consumption, the long life expectancy of the LED's, and the very high reliability .

I.T.O. Vaarwegmarkering BV

's Gravendijkseweg 23 2201 CZ Noordwijk Holland

E-mail [info@itonavaids.com](mailto:info@itonavaids.com)

tel. +31 71 3611987

fax. +31 71 3614219

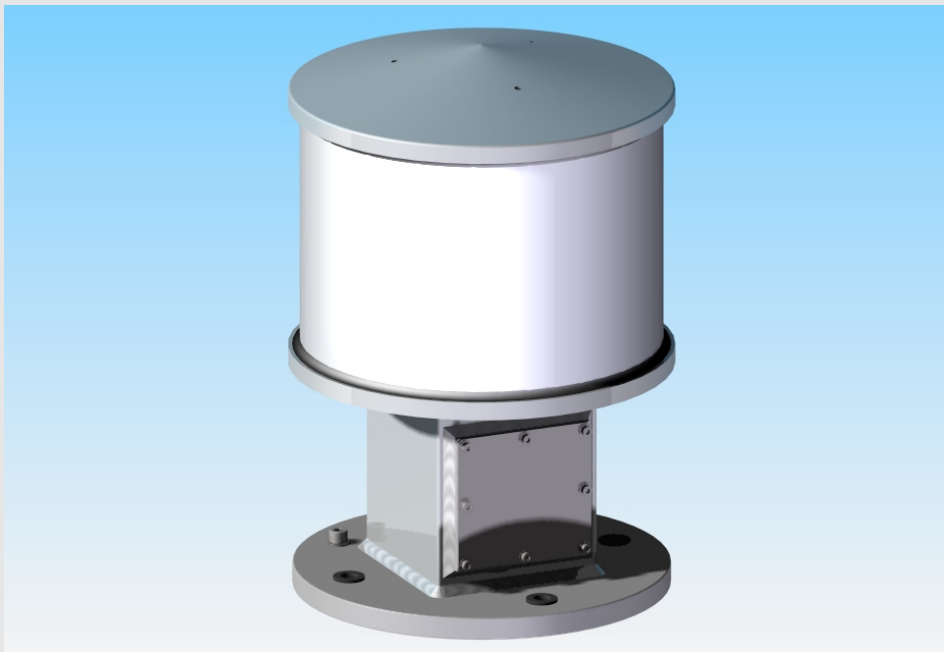
[www.itonavaids.com](http://www.itonavaids.com)



## 10 MILE LED SIGNAL LANTERN IML 250

### Specifications:

<b>Application</b>	<b>:Offshore platforms, landfall beacons, harbourlights.</b>
<b>Type</b>	<b>:IML 250.</b>
<b>Manufacturer</b>	<b>:I.T.O. Vaarwegmarkering BV.</b>
<b>Lens material/type</b>	<b>:Acrylic type PMMA250.</b>
<b>Lanternhousing</b>	<b>:Marine grade aluminium.</b>
<b>Birdspikes</b>	<b>:Polyethylene.</b>
<b>Led type</b>	<b>:High intensity, red, green, orange and clear.</b>
<b>Life expectancy</b>	<b>:Approx. 100.000 hours.</b>
<b>Flasher</b>	<b>:KG.</b>
<b>Connection</b>	<b>:Screw terminal block.</b>
<b>Cable entry</b>	<b>:PG 16 cable gland.</b>
<b>Daylight switch</b>	<b>:Internally placed.</b>
<b>Remote control range</b>	<b>:Infrared 5 meter.</b>
<b>Horizontal spread</b>	<b>:360 degrees.</b>
<b>Vertical divergence</b>	<b>:More than 2,5 degrees at 10% of I max.</b>
<b>Maximum intensity</b>	<b>:2.400 candela.</b>
<b>Power consumption</b>	<b>:32,4 watts with a fixed character at maximum intensity.</b>
<b>Visibility by T= 0,74</b>	<b>:Depending on range setting.</b>
<b>Voltage range</b>	<b>:12 volt - 34 volt DC.</b>
<b>Protection class</b>	<b>:IP68 (design).</b>
<b>Attachment</b>	<b>:4 holes of 15mm on 200 mm.</b>
<b>Weight</b>	<b>:6,7 kg.</b>



**I.T.O. Vaarwegmarkering BV**

**'s Gravendijkseweg 23 2201 CZ Noordwijk Holland**

**E-mail [info@itonavaids.com](mailto:info@itonavaids.com)**

**tel. +31 71 3611987**

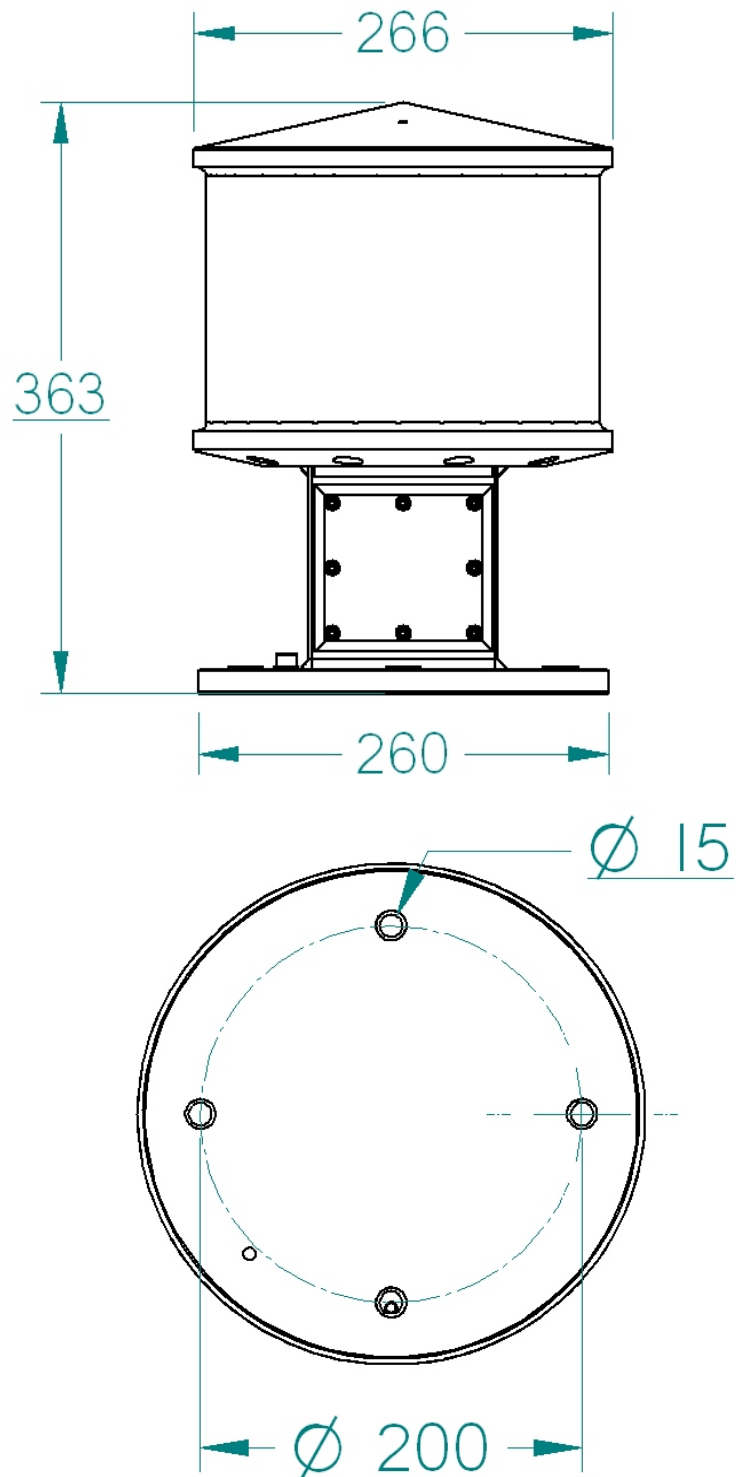
**fax. +31 71 3614219**

**[www.itonavaids.com](http://www.itonavaids.com)**



# 10 MILE LED SIGNAL LANTERN IML250

Drawings:



I.T.O. Vaarwegmarkering BV  
's Gravendijkseweg 23 2201 CZ Noordwijk Holland  
E-mail [info@itonavaids.com](mailto:info@itonavaids.com)

tel. +31 71 3611987  
fax. +31 71 3614219  
[www.itonavaids.com](http://www.itonavaids.com)

